

Technical data sheet

Radial shaft seal dismounting tool SP 50



The Seal Puller SP 50 professionally removes radial shaft seals

The incorrect dismounting of radial shaft seals can damage shafts, housings, and ball bearings. The Seal Puller SP 50 helps to avoid extra costs by dismounting seals quickly and easily. Even seals that are recessed into a housing can be professionally removed. Practically any seal can be extracted with the help of the extensions.

Set contents:

- 50 special screws for extracting radial shaft seals
- 20 distance sleeves
- 2 extensions
- 1 steel sliding hammer



Description of Seal Puller SP 50

- Many different seal varieties can be removed in only 10 to 30 seconds
- The toolkit removes radial shaft seals without damaging the shaft or housing
- Dismantling the gear housing is no longer necessary
- The removal can be completed without the hassle of dismantling neighboring parts

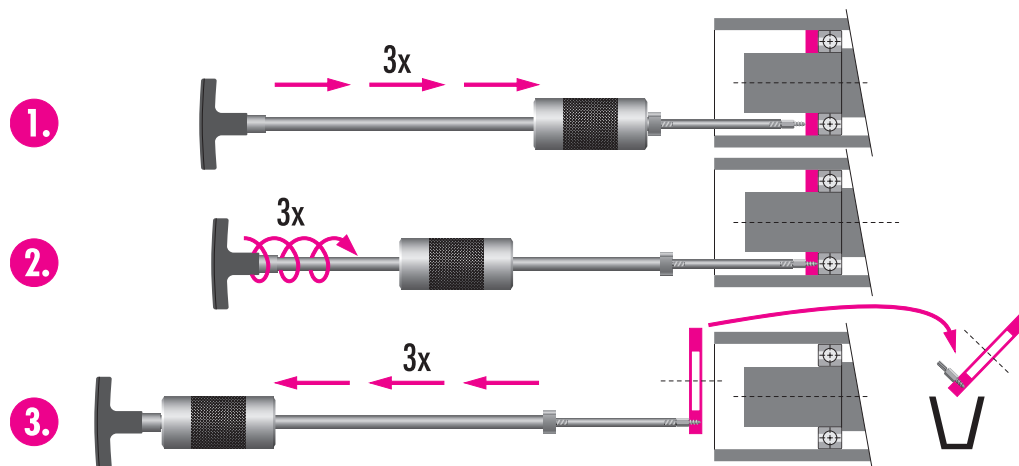
Application video on www.simatec.com



Technical data sheet

Radial shaft seal dismounting tool SP 50

The dismounting process with the Seal Puller SP 50



Dismounting in only three steps:

1. Firmly lodge the screw into the seal with 3 hammer strikes
2. Turn the screw three times
3. Pull the seal out by hammering three times in the opposite direction

