

# simalube® – the automatic single-point lubricator



Industry specific information for mines, quarries, concrete and cement plants



**simalube**®  
smart lubrication

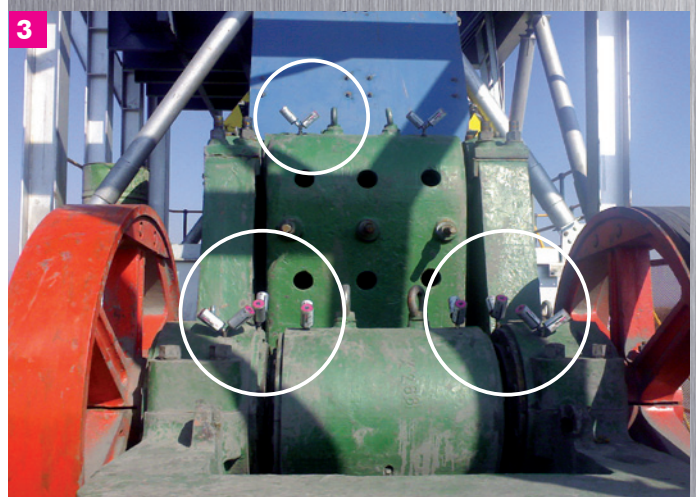
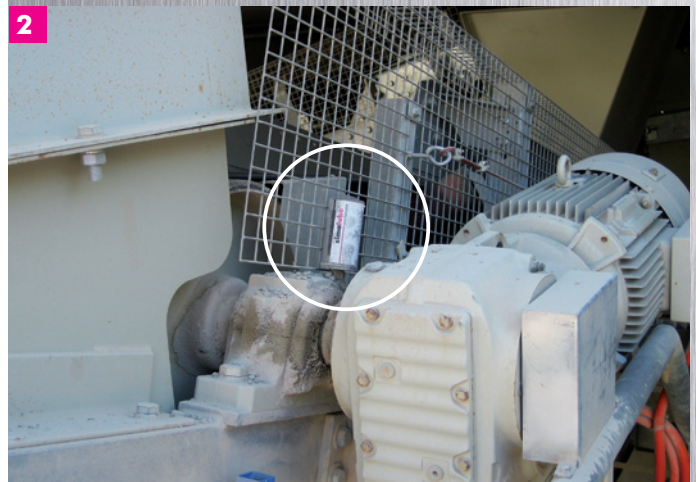
# The lubrication expert

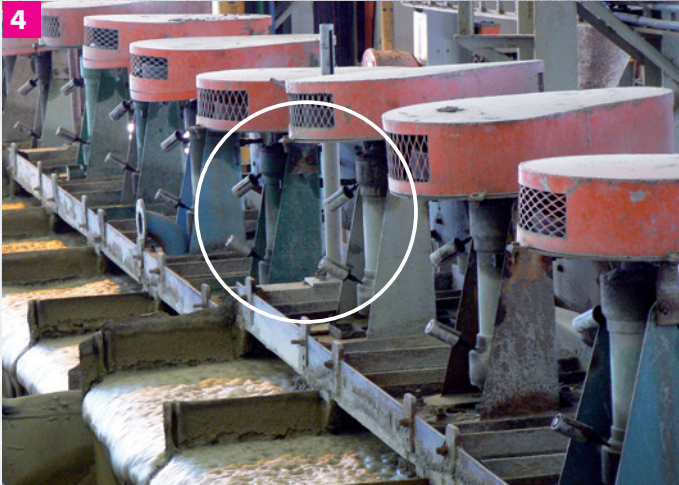
**Reduce costs and extend the life of your equipment.**

Using **simalube**<sup>®</sup> lubricators significantly reduces maintenance costs in mines, quarries, concrete and cement plants.

By continuously dispensing lubricant, **simalube**<sup>®</sup> increases the life of bearings, chains, guides, gears and other mechanical parts.

«**simalube**<sup>®</sup> completely replaces manual lubrication»





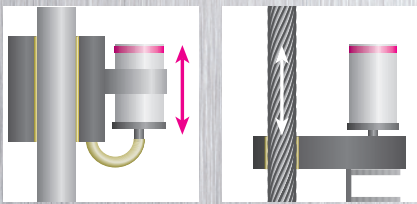
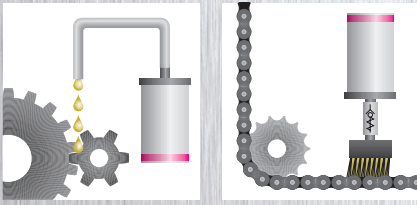
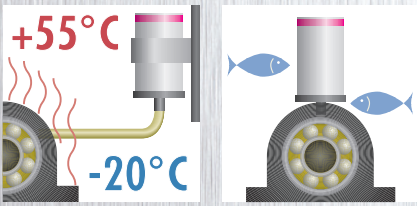
«**simalube® reduces costs and increases safety in the workplace**»

- 1 Bearing lubrication on the main drive shaft of a filter pump
- 2 Vertical bearing lubricated on a conveyor belt
- 3 Crusher lubricated with **simalube®**
- 4 **simalube®** automatically lubricates engines on a flotation
- 5 Protective caps used to prevent damage to the lubricator from harsh external conditions
- 6 Belt drive lubricated with **simalube®**
- 7 Vertical bearing on the drive of a conveyor belt. The lubricators are connected directly to the bearing
- 8 Maintenance personnel are very satisfied with **simalube®**



### Minimize hazards and prevent accidents

The **simalube®** dispensers are ideal for use in hard to reach places. The lubricator also automatically and reliably supplies lubricant to exposed points. With the installation of **simalube®**, the amount of time that employees spend in dangerous areas is significantly reduced. The regular, manual greasing at plants and factories with a grease gun is completely unnecessary. The maintenance staff's exposure to noise, dust and dangerous moving parts is significantly reduced, thus increasing the safety of the operation.



## Applications and benefits

**simalube® applications in the production of construction material and processing:**

- **Conveyors**
- **Belt tensioners**
- **Ventilation systems**
- **Gears/engines**
- **Shifters**
- **Silos & silo filling**
- **Roller screen/sliding tables**
- **Crushers**
- **Transport systems**
- **Mixing beds**
- **Rotary kilns**
- **Mills**
- **Fans**
- **Pumps**
- **Bagging**
- **Palletizing**

### Advantages of the simalube® lubricator:

- Reliability: Once installed, the lubrication points are reliably supplied with lubricant and not forgotten
- Flexibility: The running time is adjustable from 1-12 months
- The time setting can be adjusted at any time
- The lubricator may be shut off and turned back on
- Units can be refilled
- Available in five sizes: 15, 30, 60, 125 and 250 ml, plus Multipoint
- With transparent housing, the progress of the lubrication process can be monitored at any time (volume control)
- Ideal ratio between lubricant content and lubricator size enables the unit to be installed in areas with limited space
- The hermetically sealed system prevents the contamination of dust and debris
- Simple, environmentally-friendly disposal (100% recyclable)
- Extensive selection of user-friendly accessory parts and mounting hardware



We will gladly inform you about the application of **simalube®** products in the wood industry.

Our specialists have a highly-qualified technical knowledge and will show you how automatic lubrication can reduce costs and extend the service life of your machines.

**Pomac Lub Services**  
Kortrijkstraat 187  
B- 8770 INGELMUNSTER

Tel.: +32 (0) 51 31 62 05  
Fax: +32 (0) 51 30 96 21  
info@simalube.be  
www.simalube.be

# POMAC

## LUB SERVICES

**YOUR PARTNER IN LUBRICATION**

[www.pomac.be](http://www.pomac.be) - [www.simalube.be](http://www.simalube.be)

Kortrijkstraat 187 • B-8770 Ingelmunster • T. +32 (0)51.31.62.05 • F. +32 (0)51.30.96.21 • Email: info@pomac.be

