

simalube® – the automatic single-point lubricator



Technical information for the wood processing industry



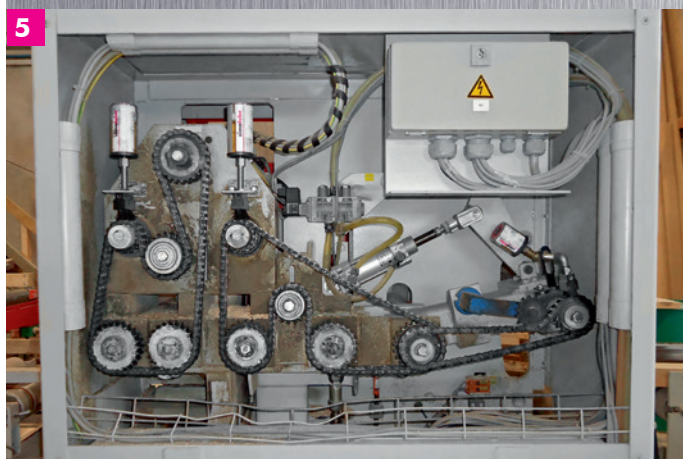
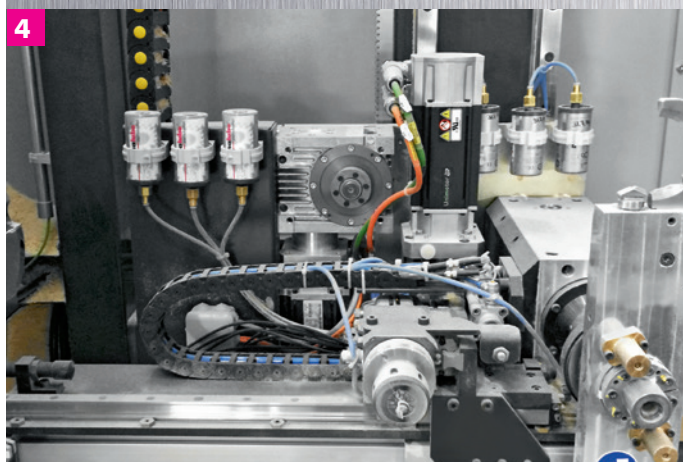
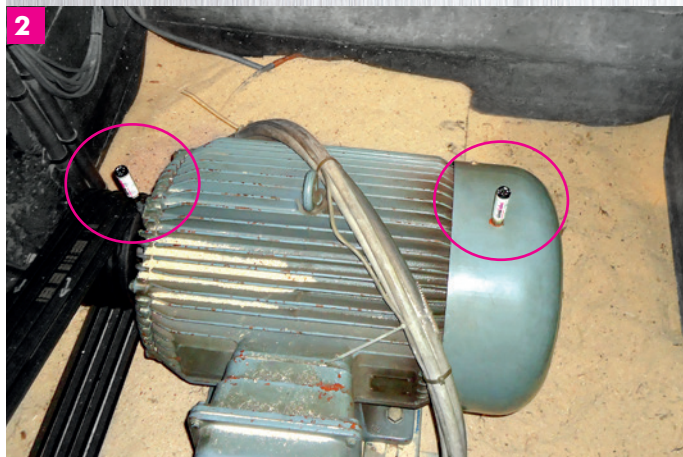
simalube®
smart lubrication

The lubrication expert

simalube® is extremely reliable and flexible and enables a high level of machine output.

In wood processing companies, there is often a huge amount of dirt and dust that cause a permanent build-up of dirt on the ball bearing. Early bearing damage can occur that leads to a considerably lower machine output. For this reason, it is particularly important to lubricate the bearings in a reliable, precise manner. The **simalube®** automatic lubricator ensures that the exact amount of lubricant – grease or oil – is applied to the lubrication point, thus avoiding excess or deficient lubrication. Thanks to the hermetically sealed system of the **simalube®** lubricator, dirt is also prevented from penetrating into the roller bearings, thus avoiding bearing damage at an early stage. The negligible downtimes and maintenance required also allows a huge saving of costs.

«simalube® lubricates bearings continuously, lengthens the service life of machinery and reduces maintenance costs in every wood processing company»



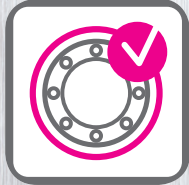
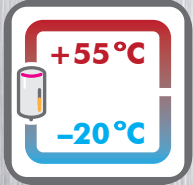
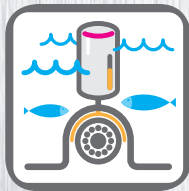
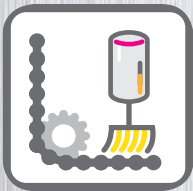
Reduced risks of accidents in the workplace thanks to **simalube**[®]

Due to the compact dimensions of the **simalube**[®] lubricator, it can be installed in even the narrowest of spaces, making it possible to cater for even the most inaccessible lubrication points. This minimises the time needed for workers to linger in the danger zones and increases safety in the workplace. The elimination of manual lubrication also leads to a considerable saving of time, as all lubrication points are now lubricated automatically over a period of 1 to 12 months.

«**Considerable saving of time and improved safety in the workplace thanks to automatic lubrication**»



- 1 Optimum lubrication of roller bearings thanks to a 125 ml **simalube**[®] cartridge, which rotates together with the bearings on the sheet rollers of a band saw
- 2 The electric motor of a chipping machine is lubricated in a sawmill
- 3 The spindle of a circular saw is reliably lubricated with two 125 ml **simalube**[®] cartridges
- 4 Six lubricators apply the right amount of lubricant to the linear guides of an assembly system
- 5 The chains of a cross-cut machine with roll feed are permanently lubricated using three **simalube**[®] lubricators fitted with brushes and cleaned at the same time
- 6 The 125 ml **simalube**[®] cartridge lubricates the bearings of the return pulley of a transport sledge
- 7 The conveyor chain is continuously lubricated and at the same time cleaned by the brush. The cover protects the lubricator from external influences
- 8 The bearings of a vibration channel are lubricated continuously by three lubricators
- 9 The Y-ball-bearing unit of a conveyor belt is continuously supplied with lubricant
- 10 A multi-blade circular saw is supplied with oil by eight 125 ml **simalube**[®] lubricators



Applications and advantages

simalube® applications in the wood processing industry:

- Conveyor systems
- Track rollers
- Chipping systems
- Drives/motors
- Spindles/ducts
- Transportation systems
- Vibration channels
- Trimming systems
- Loading cranes
- Saws of all types
- Debarking systems
- Conveyor chains

Advantages of the simalube® lubrication system:

- Tried and tested lubrication system in the wood processing industry
- Reliability: Once installed, the lubrication points are reliably lubricated and never forgotten
- The hermetically sealed system prevents contamination by dust and debris (IP68)
- Reduction of service requirements and maintenance costs: Manual lubrication is no longer necessary meaning fewer disruptions and a huge saving of time
- Longer service life of machines thanks to continuous and accurate lubrication
- Flexibility: The running time is adjustable from 1–12 months
- No need to shut down the machines during maintenance
- Available in five sizes: 15, 30, 60, 125 and 250 ml, plus multipoint
- Thanks to the transparent housing, the progress of the lubrication process can be monitored at all times (fill level control)
- Installation is possible even in very narrow spaces
- Simple, environmentally-friendly disposal (100% recyclable)



We will gladly inform you about the application of **simalube®** products in the wood industry.

Our specialists have a highly-qualified technical knowledge and will show you how automatic lubrication can reduce costs and extend the service life of your machines.

Pomac Lub Services
Kortrijkstraat 187
B- 8770 INGELMUNSTER

Tel.: +32 (0) 51 31 62 05
Fax: +32 (0) 51 30 96 21
info@simalube.be
www.simalube.be

POMAC

LUB SERVICES

YOUR PARTNER IN LUBRICATION

www.pomac.be - www.simalube.be

Kortrijkstraat 187 • B-8770 Ingelmunster • T. +32 (0)51.31.62.05 • F. +32 (0)51.30.96.21 • Email: info@pomac.be

